

Maldives Land and Survey Authority,

MINISTRY OF HOUSING AND INFRASTRUCTURE

Ameenee Magu, Maafannu, Male', 20392, Maldives.

Office (PABX): +(960) 3004300, Fax: +(960) 3004254

Email: survey@mhe.gov.mv

Web: www.surveyofmaldives.gov.mv, www.mhe.gov.mv



CONTROL POINT DETAILS		Station Number	PSM 5166
Coordinate Information			
Geodetic		Grid	
WGS 84		UTM Zone 43	
Lat:	5° 29' 41.41639" N	E:	325409.9432m
Long:	73° 25' 26.41786" E	N:	607593.3187m
Ellp Height:		Orth Height:	0.851m
Island Name: LH. KOMANDOO		Date:	29th AUGUST 2014

Monument description & method of survey:

- o Type A monument
- o Stainless steel plate fixed to concrete by two bolts
- o Horizontal coordinates fixed by GNSS Static survey.
- o Elevation reduced relative to Local MSL by double level run

General site condition & access:

- o PSM5166 was established eastern side of island, at the base of arrival jetty, in the vegetation line of the island.
- o PSM5166 is located in an area which is secure and easy to access and locate
- o Easily accessible area with wide angle of sky visibility

Owner: KOMANDOO HOLDINGS PVT LTD



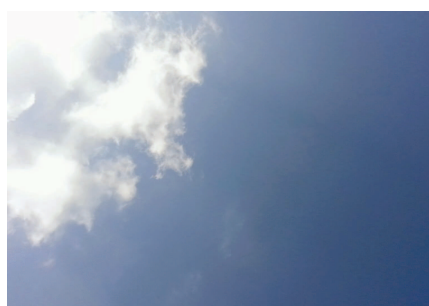
Bottom



North



East



Up



South



West

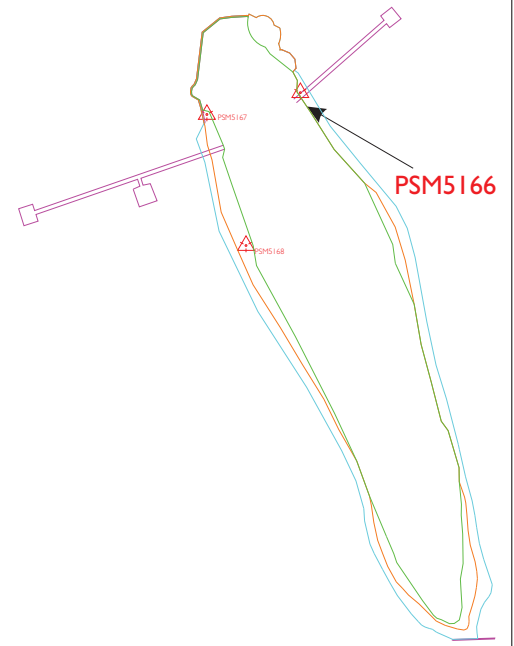
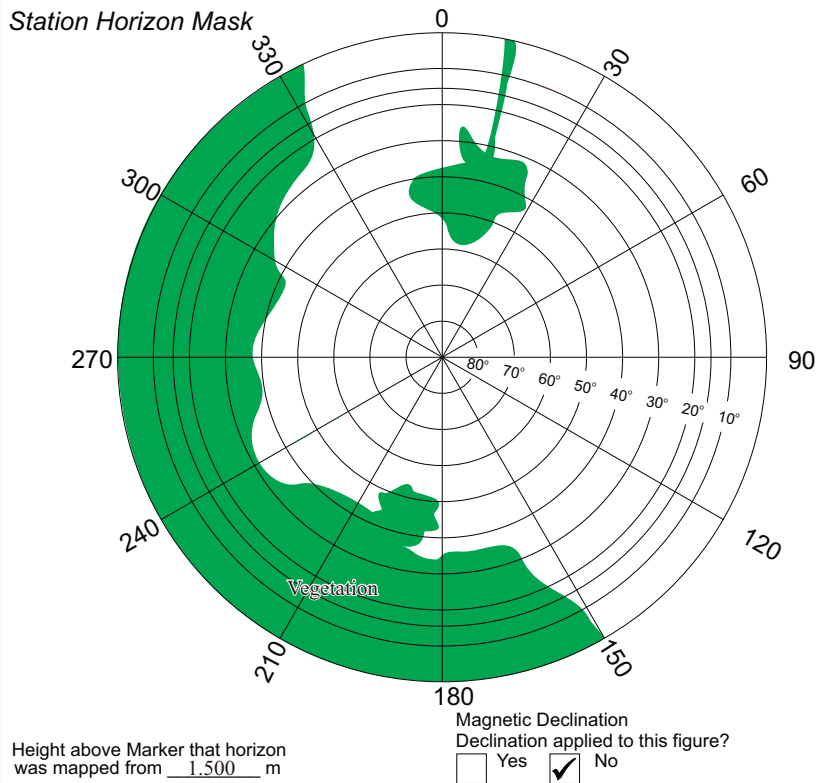
SITE INFORMATION

Station Number

PSM 5 1 6 6

Station Horizon Mask

Locality



PSM5166

6.854 m

0.393m



Sketched by: Shafee

Scale: Not to scale

Date: Dec. 2014

Maldives Land and Survey Authority,

MINISTRY OF HOUSING AND INFRASTRUCTURE

Ameenee Magu, Maafannu, Male', 20392, Maldives.

Office (PABX): +(960) 3004300, Fax: +(960) 3004254

Email: survey@mhe.gov.mv

Web: www.surveyofmaldives.gov.mv, www.mhe.gov.mv



CONTROL POINT DETAILS		Station Number	PSM 5167
Coordinate Information			
Geodetic		Grid	
WGS 84		UTM Zone 43	
Lat:	5° 29' 40.88786" N	E:	325341.1667m
Long:	73° 25' 24.18481" E	N:	607577.2647m
Ellp Height:		Orth Height:	1.171m
Island Name: LH.KOMANDOO		Date:	29th AUGUST 2014

Monument description & method of survey:

- o Type A monument
- o Stainless steel plate fixed to concrete by two bolts
- o Horizontal coordinates fixed by GNSS Static survey.
- o Elevation reduced relative to Local MSL by double level run
- o A level double run was recorded using PSM5166 as the base, vertical control levels of PSM5167 was determined from the level circuit

General site condition & access:

- o PSM5167 was established on the western side of island, north of service jetty, in the vegetation line of the island
- o PSM5167 is located in an area which is secure and easy to access and locate
- o Easily accessible area with wide angle of sky visibility

Owner: KOMANDOO HOLDINGS PVT LTD



Bottom



North



East



Up



South



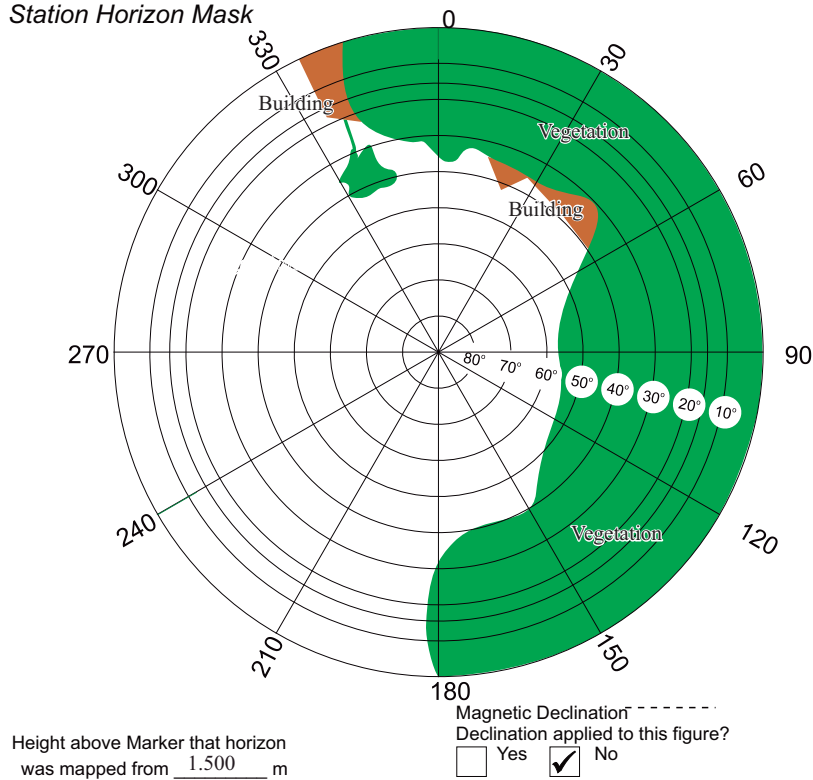
West

SITE INFORMATION

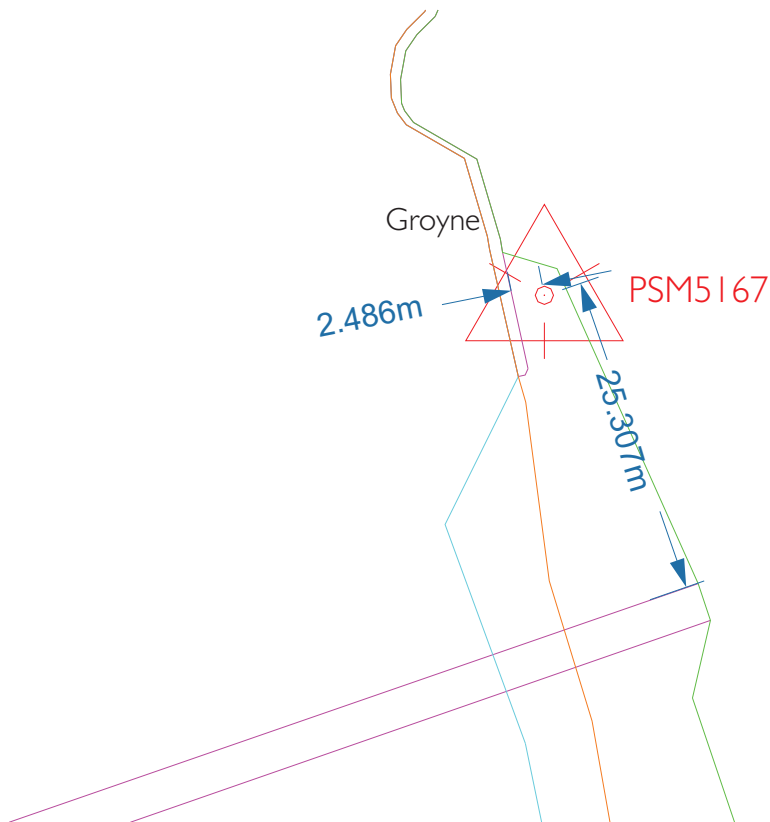
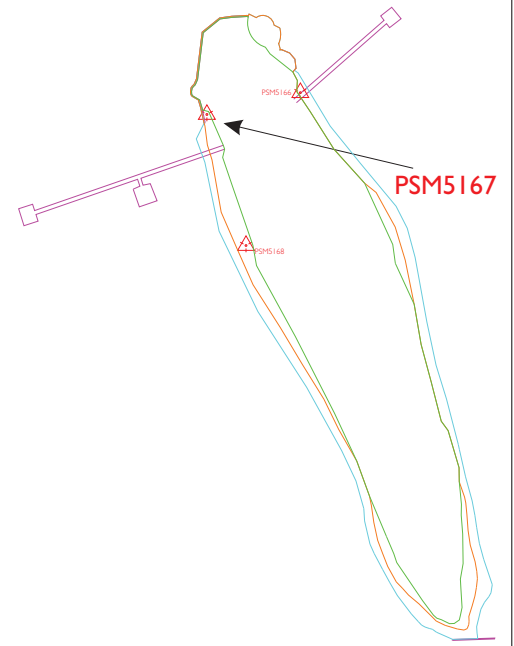
Station Number

PSM 5167

Station Horizon Mask



Locality



Sketched by: Shafce

Scale: Not to scale

Date: Dec. 2014

Maldives Land and Survey Authority,

MINISTRY OF HOUSING AND INFRASTRUCTURE

Ameenee Magu, Maafannu, Male', 20392, Maldives.

Office (PABX): +(960) 3004300, Fax: +(960) 3004254

Email: survey@mhe.gov.mv

Web: www.surveyofmaldives.gov.mv, www.mhe.gov.mv



CONTROL POINT DETAILS		Station Number	PSM 5168
Coordinate Information			
Geodetic		Grid	
WGS 84		UTM Zone 43	
Lat:	5° 29' 37.75451" N	E:	325369.9631m
Long:	73° 25' 25.12860" E	N:	607480.9410m
Ellp Height:		Orth Height:	1.116m
Island Name: LH. KOMANDOO		Date:	29th AUGUST 2014

Monument description & method of survey:

- o Type A monument
- o Stainless steel plate fixed to concrete by two bolts
- o Horizontal coordinates fixed by GNSS Static survey.
- o Elevation reduced relative to Local MSL by double level run
- o A level double run was recorded using PSM5166 as the base, vertical control levels of PSM5168 was determined from the level circuit

General site condition & access:

- o PSM5168 was established on the western side of island, south of service jetty, in the vegetation line of the island.
- o PSM5168 is located in an area which is secure and easy to access and locate.
- o Easily accessible area with wide angle of sky visibility

Owner: KOMANDOO HOLDINGS PVT LTD



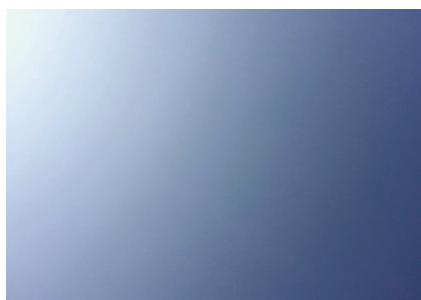
Bottom



North



East



Up



South



West

SITE INFORMATION

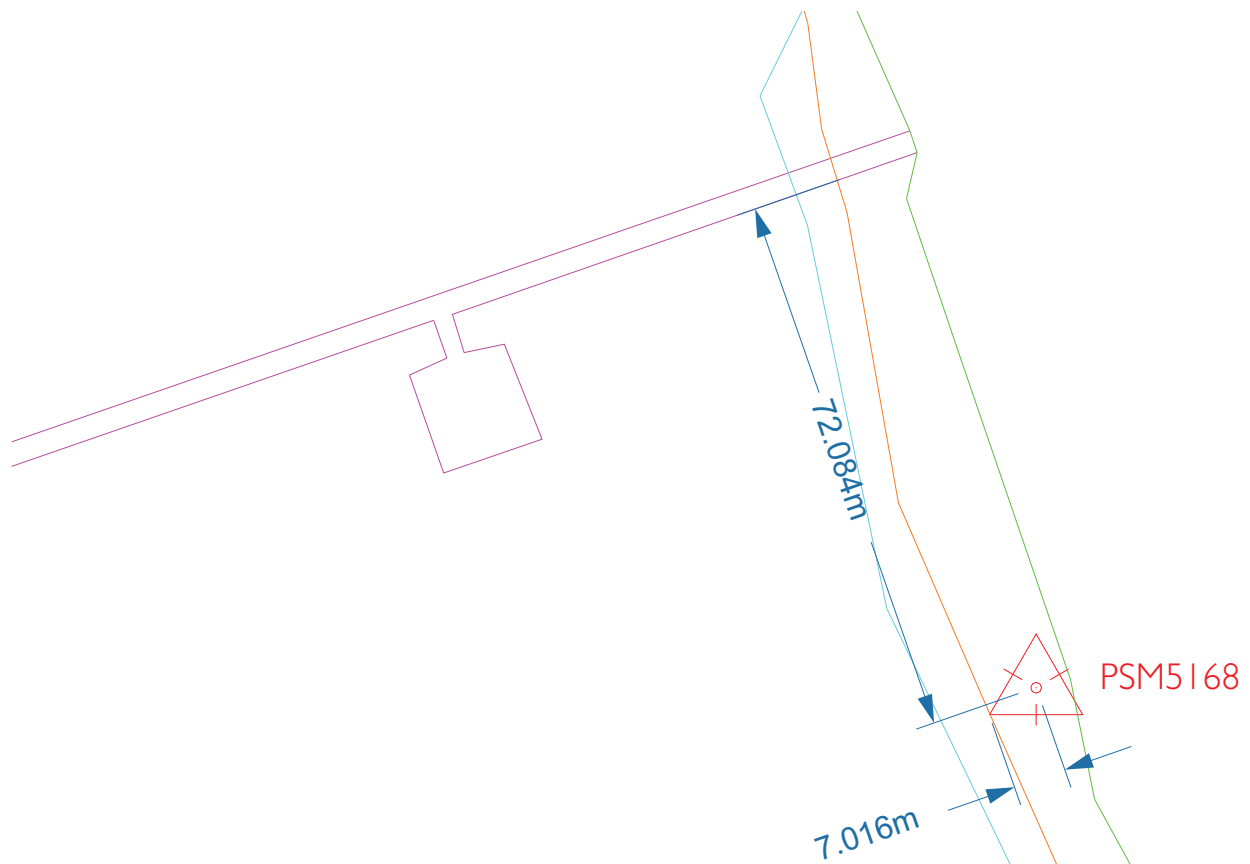
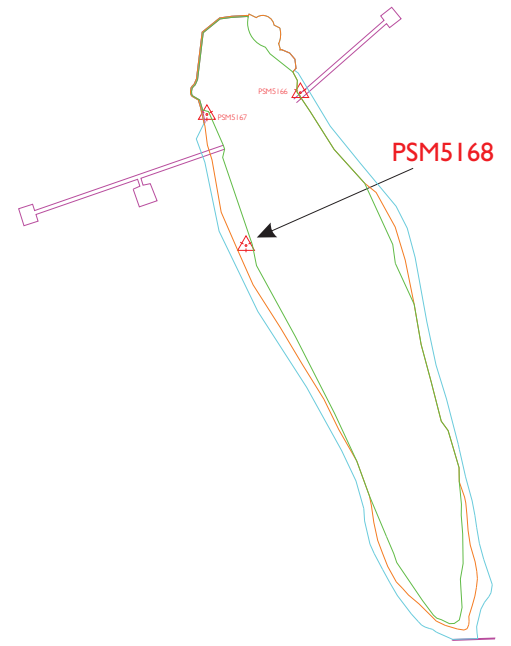
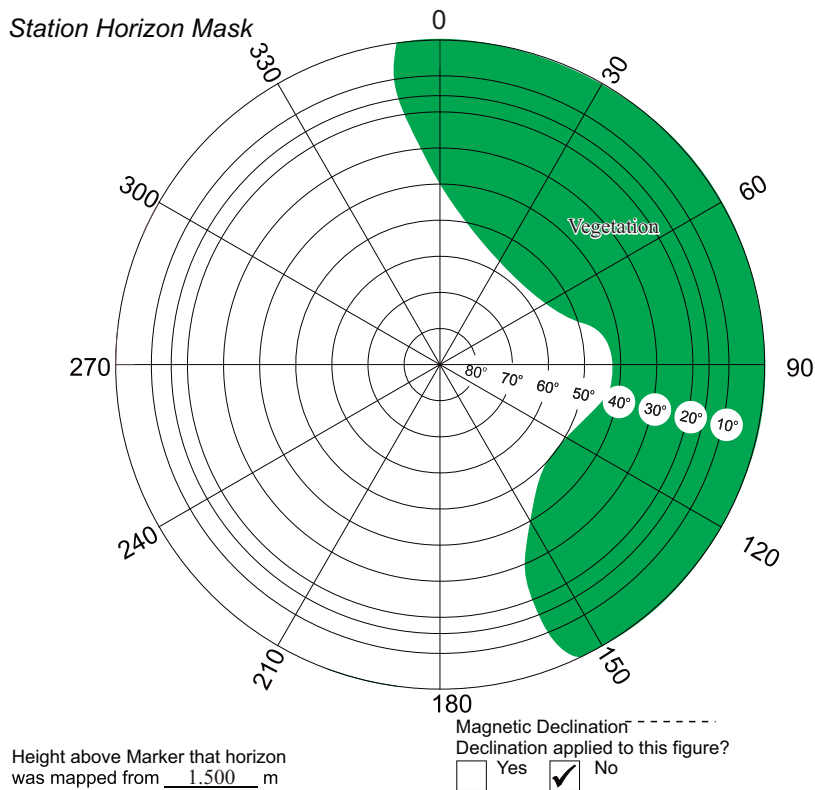
Station Number

PSM

5168

Station Horizon Mask

Locality



Sketched by: Shafce

Scale: Not to scale

Date: Dec. 2014